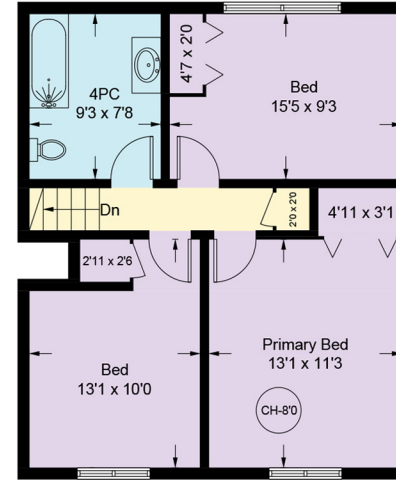
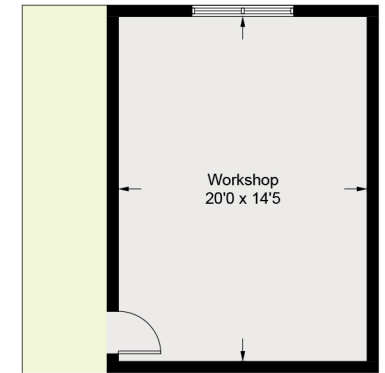


Main Floor - 1110 sq ft



Upper Floor - 627 sq ft



(Not Shown In Actual Location / Orientation)

412 Rodello Street

Floor Area is calculated including the external walls (GEA).
All measurements are approximate and the plan is for layout guidance only. Buyers should verify all measurements.

Floor	AREA (Sq. Ft.)		
	Finished	Unfinished	Garage
Main	1110	0	275
Upper	627	0	0
Workshop	336	0	0
Total	2073	0	275