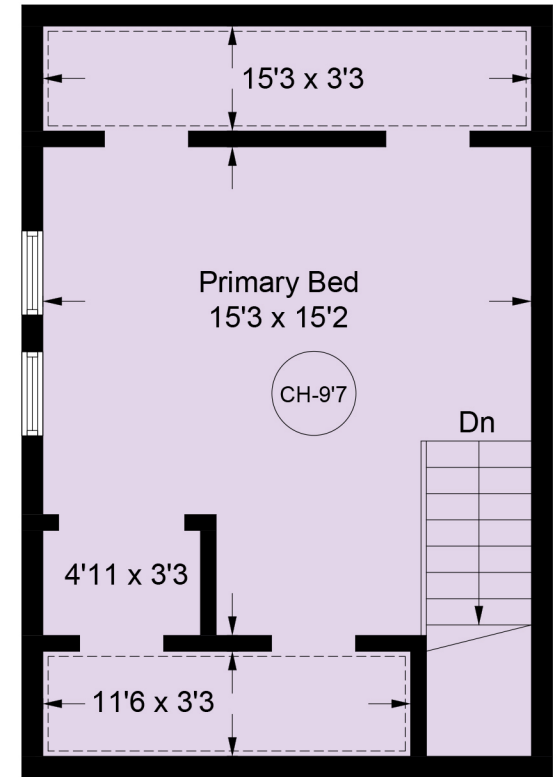




Main Floor - 722 sq ft

= Reduced headroom below 1.5m / 5'0



**Upper Floor - 292 sq ft
(Excluding restricted height areas)**

1319 Docliddle Road

Floor Area is calculated including the external walls (GEA).
All measurements are approximate and the plan is for layout guidance only. Buyers should verify all measurements.

Floor	AREA (Sq. Ft.)		
	Finished	Unfinished	Garage
Main	722	128	0
Upper	292	0	0
Total	1014	128	0